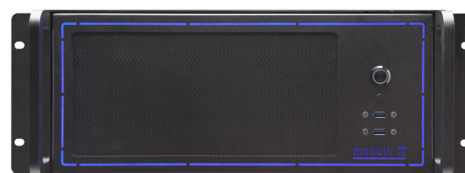
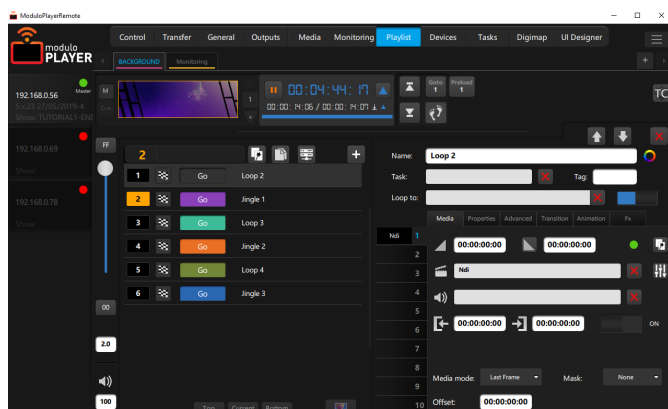


Modulo Player Pro with ruggedized chassis

REF: RMP-PRO-1, RMP-PRO-2, RMP-PRO-4, RMP-PRO-6, RMP-PRO-2x4K, RMP-PRO-3x4K, RMP-PRO-4x4K



A powerful media server solution for live events

Modulo Player Pro comes with a powerful configuration combined with additional storage capacity. Perfect for corporate or live events, Modulo Player Pro offers several customization options to best adapt to your needs. In its ruggedized enclosure version, Modulo Player Pro can endure the roughest conditions. Its reinforced suspended chassis and professional connectivity ensure utmost reliability.

Hardware specifications

Operating System: Windows 10 LTSB x64
RAM: 4 x 4GB DDR4
Storage: 1 x SSD 120GB OS / DATA: depending on version
Processor: Intel® Core™ i9
LAN: 2 x RJ45 10GbE
Audio: 2 x XLR symmetrical audio outputs

USB: Back panel: 1 x USB 3.1 (Gen 2) + 3 x USB 3.0
 Front panel: 2 x USB 3.0
Graphics Card: AMD Radeon Pro
Pro Power Neutrik® TRUE 1 Connection
Power Supply: 100-240 VAC / 50-60Hz / 850W
Average power consumption (high load): 450W

Versions

Reference	Physical outputs	Outputs	Storage Data
RMP-PRO-1	4 x DP 1.4	1 output up to WQXGA ⁽¹⁾	2TB SSD
RMP-PRO-2	4 x DP 1.4	2 outputs up to WQXGA ⁽¹⁾	2TB SSD
RMP-PRO-4	4 x DP 1.4	4 outputs up to WQXGA ⁽¹⁾ or 1 output up to 4K ⁽²⁾	2TB SSD
RMP-PRO-6	6 x DP 1.4	6 outputs up to WQXGA ⁽¹⁾ or 1 output up to 4K ⁽²⁾	2TB SSD
RMP-PRO-2x4K	4 x DP 1.4	4 outputs up to WQXGA ⁽¹⁾ or 2 outputs up to 4K ⁽²⁾	4 TB PCIE NVME SSD
RMP-PRO-3x4K	6 x DP 1.4	6 outputs up to WQXGA ⁽¹⁾ or 3 outputs up to 4K ⁽²⁾	4 TB PCIE NVME SSD
RMP-PRO-4x4K	6 x DP 1.4	6 outputs up to WQXGA ⁽¹⁾ or 4 outputs up to 4K ⁽²⁾	4 TB PCIE NVME SSD

⁽¹⁾ 2560 x1600

⁽²⁾ 4096x2160

Options

Reference	Reference
DELTA-3G-2	MOD-DP
DELTA-412G	MOD-SDI4
DELTA-812G	AD-GEN
DELTA-HDMI2	TC-USB-R
DELTA-HOST	TC-PCIE-RW
MOD-HDMI	TC-USB-R
Live Capture 2 x 3G SDI 3G	Flex module single DP1.2
Live Capture 1 x12G SDI or 4 x 3G SDI	Flex module 4 x SDI 3G
Live Capture 2x 12G SDI or 8 x 3G SDI	Genlock card
Live Capture 2 x HDMI 2.0	Time code reader card - Pcie
Flex Host Card	Time code reader generator card - Pcie
Flex module single HDMI 2.0	Time code reader card - USB



Software specifications

Remote control Software

Free remote application (Mac/PC) to control any number of networked Modulo Player

Playlist

Unlimited number of playlists and cues
Cues can be triggered manually or automatically
10 layers per cue
High flexibility allowing last-minute changes

Settings per layer

Position, scale, rotation, opacity, color, fade in/out
Advanced colorimetry, crop, progressive mask, clip, keyframed animation
Database of 2D GPU effects
Support for interactive shader format
Movie: In/out time, loop mode, speed change with frame blending

Synchronization

Synchronize any number of networked Modulo Player with an easy master/slave set-up
Synchronization with MTC or LTC timecode (optional)
Genlock/Framelock (optional)

Outputs tools

Warping grid (keystone or curve), advanced soft edge, mask, test patterns generator, advanced color adjustment
Exclusive X-Map function for complex video mapping
LED Pixel mapper (Art-Net)

Low-latency live mixer

Dedicated multi-user remote application (Mac/PC)
Live Preview/Program/Confidence screens
Unlimited number of destination and mix engines
Preset & Quickset
Mask & Keying
Transition effects: cut, fade, flying,...
Cut & Take buttons
Sources: Workspace, HDMI 2.0, low-latency SDI 3G/12G, NDI

Environmental specifications

Max altitude: 2 700 m
Operation temperature: 10°C ~ 35°C
Non operation temperature: -40°C ~ 70°C
Non operation humidity: 20% ~ 90% (Non condensing)

Complimentary

powerCON TRUE1 cable connector
EU power cord
1 x active adaptor DP->DVI single link per output
Modulo Player Remote: PC/Mac remote control software
Modulo Wing: PC/Mac application to see your playlists and launch tasks. Also available on iOS and Android
Modulo Panel: PC/Mac application to host your custom user panels

Warranty

2-year return-to-base

Medias

MPEG-2 (4:2:2), H264 (4:2:0) with multiplexed audio embedded
HAP, HAP Alpha, HAP Q support
Apple ProRes with 10 bits support
Multichannel audio file (wav,aiff)
Still images: png, jpg, tiff
Other media: Text, scrolling text, counter/countdown/clock, web page

Interactivity

Easily control the parameters of your media - including position, rotation, opacity, color,... - using external devices (OSC, Art-Net, MIDI, TCP/IP Rotary encoder)

Show Control

Create, control, and play automated tasks for a wide number of preloaded external devices including video-projectors, matrix switchers, video processors
The device main parameters are available in our extensive library to ensure fast and easy control through Modulo Player
Trigger tasks from specific devices such as Calendar, MIDI, OSC, GPIO, Art-Net and DMX
Possibility to control Modulo Player with ASCII TCP/IP command with an extensive protocol

User Panel

Easily create different user panels: Drag & drop tasks, add buttons, texts, images, web pages, etc.
User panels are compatible with PC, Mac, iOS, and Android devices

Physical specifications

Frame	19-inch rack 4U		
Product	W	H	D
Dimensions without handles	431 mm 16,97"	176,80 mm 6,96"	645 mm 25,39"
Dimensions with handles	482 mm 18,98"	176,80 mm 6,96"	690 mm 27,17"
Weight	~ 29 kg	~ 64 lbs	
Shipping	W	H	D
Dimensions	550 mm 21,65"	310 mm 12,20"	800 mm 31,50"
Weight	~ 31 kg	~ 68 lbs	

Technical specifications are subject to change without prior notice.

30052019 - ModuloPlayerProRG     | contact@modulo-pi.com | +33 951 312 184 | modulo-pi.com

